

Nestaan Holland BV  
 Slabbeoordweg 31  
 4691 RZ THOLEN  
 NETHERLANDS

Eurofins Product Testing A/S  
 Smedeskovvej 38  
 8464 Galten  
 Denmark

CustomerSupport@eurofins.com  
 www.eurofins.com

# VOC EMISSION TEST REPORT


## French VOC Regulation

13 June 2023

### 1 Sample Information

Sample name	Nestaan SQ482/28
Batch no.	-
Stated production date	03/04/2023
Product type	Polyurethane Foam
Stated thickness, mm	-
Sample reception	21/04/2023

### 2 Brief Evaluation of the Results

Regulation or protocol	Conclusion	Version of regulation or protocol
French VOC Regulation		Decree of March 2011 (DEVL1101903D) and Arrêté of April 2011 (DEVL1104875A) modified in February 2012 (DEVL1133129A)
French CMR components	Pass	Regulation of April and May 2009 (DEVP0908633A and DEVP0910046A)

Full details based on the testing and direct comparison with limit values are available in the following pages  
 Regarding pass/fail decision rule please see appendix



Laura Hartung Sørensen  
 Analytical Service Manager



Rasmus Verdier  
 Analytical Service Manager

## Table of contents

<b>1</b>	<b>Sample Information</b>	<b>1</b>
<b>2</b>	<b>Brief Evaluation of the Results</b>	<b>1</b>
<b>3</b>	<b>Applied Test Methods</b>	<b>3</b>
3.1	General Test References	3
3.2	Specific Laboratory Sampling and Analyses	3
<b>4</b>	<b>Test Parameters, Sample Preparation and Deviations</b>	<b>4</b>
4.1	VOC Emission Chamber Test Parameters	4
4.2	Preparation of the Test Specimen	4
4.3	Picture of Sample	4
4.4	Deviations from Referenced Protocols and Regulations	4
<b>5</b>	<b>Summary and Evaluation of the Results</b>	<b>5</b>
5.1	Comparison with Limit Values of the French VOC Regulation	5
5.2	Comparison with Limit Values of the CMR Components	5
<b>6</b>	<b>Appendices</b>	<b>6</b>
6.1	Chromatogram of VOC Emissions after 28 Days	6
6.2	How to Understand the Results	7
6.3	Description of VOC Emission Test	8
6.4	Quality Assurance	8
6.5	Accreditation	9
6.6	Uncertainty of the Test Method	9
6.7	Decision Rules	9
6.8	Version History	9

### 3 Applied Test Methods

#### 3.1 General Test References

Regulation, protocol or standard	Version	Reporting limit VOC [ $\mu\text{g}/\text{m}^3$ ]	Calculation of TVOC	Combined uncertainty <sup>a</sup> [RSD(%)]
EN 16516	2017 + A1:2020	5	Toluene equivalents	22%
ISO 16000 -3 -6 -9 -11	2006-2022 depending on part	2	Toluene equivalents	22%
ASTM D5116-10	2010	-	-	-
French VOC Classes	Decree of 03/2011 (DEVL1101903D) and arrêté of 02/2012 (DEVL1133129A)	2	Toluene equivalents	22%
French CMR	Regulation of April and May 2009 (DEVP0908633A and DEVP0910046A)	1	Toluene equivalents	22%

#### 3.2 Specific Laboratory Sampling and Analyses

Procedure	External Method	Internal SOP	Quantification limit / sampling volume	Analytical principle	Uncertainty <sup>a</sup> [RSD(%)]
Sample preparation	ISO 16000-11:2006, EN 16516:2017+A1:2020, AgBB:2021, EMICODE:2022	71M549810	-	-	-
Emission chamber testing	ISO 16000-9:2006, EN 16516:2017+A1:2020	71M549811	-	Chamber and air control	-
Sampling of VOC	ISO 16000-6:2021, EN 16516:2017+A1:2020	71M549812	5 L	Tenax TA	-
Analysis of VOC	ISO 16000-6:2021, EN 16516:2017+A1:2020	71M542808B	1 $\mu\text{g}/\text{m}^3$	ATD-GC/MS	10%
Sampling of aldehydes	ISO 16000-3:2022, EN 16516:2017+A1:2020	71M549812	35 L	DNPH	-
Analysis of aldehydes	ISO 16000-3:2022, EN 16516:2017+A1:2020	71M548400	3-6 $\mu\text{g}/\text{m}^3$	HPLC-UV	10%
Sampling of phthalates*	ISO 16000-33:2017, MEL-09:2003	71M549812	60 L	XAD-2	-
Analysis of phthalates*	ISO 16000-33:2017	71M546060	0.6 $\mu\text{g}/\text{m}^3$	GC/MS	10%

The results are only valid for the tested sample(s).

This report may only be copied or reprinted in its entirety.

## 4 Test Parameters, Sample Preparation and Deviations

### 4.1 VOC Emission Chamber Test Parameters

Parameter	Value	Parameter	Value
Chamber volume, V[L]	119	Preconditioning period	-
Air Change rate, n[h <sup>-1</sup> ]	0.5	Chamber test period	04/05/2023 - 01/06/2023
Area specific ventilation rate, q [m/h or m <sup>3</sup> /m <sup>2</sup> /h]	1.25	Analytical test period	04/05/2023 - 09/06/2023
Air Velocity [m/s]	0.1	Loading factor [m <sup>2</sup> /m <sup>3</sup> ]	0.4
Temperature of supply air, T [°C]	23 ± 1	Test scenario	Flooring or ceiling
Relative humidity of supply air, RH [%]	50 ± 3		

### 4.2 Preparation of the Test Specimen

Edges and back were covered with aluminium foil.

### 4.3 Picture of Sample


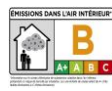

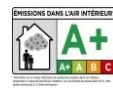


### 4.4 Deviations from Referenced Protocols and Regulations

No deviations from the referenced test methods were observed.

## 5 Summary and Evaluation of the Results

### 5.1 Comparison with Limit Values of the French VOC Regulation

	CAS No.	Conc. 28 days $\mu\text{g}/\text{m}^3$	 $\mu\text{g}/\text{m}^3$	 $\mu\text{g}/\text{m}^3$	 $\mu\text{g}/\text{m}^3$	 $\mu\text{g}/\text{m}^3$
TVOC	-	< 2	> 2000	< 2000	< 1500	< 1000
Formaldehyde	50-00-0	3.4	> 120	< 120	< 60	< 10
Acetaldehyde	75-07-0	8.4	> 400	< 400	< 300	< 200
Toluene	108-88-3	< 2	> 600	< 600	< 450	< 300
Tetrachloroethylene	127-18-4	< 2	> 500	< 500	< 350	< 250
Ethylbenzene	100-41-4	< 2	> 1500	< 1500	< 1000	< 750
Xylene	1330-20-7	< 2	> 400	< 400	< 300	< 200
Styrene	100-42-5	< 2	> 500	< 500	< 350	< 250
2-Butoxyethanol	111-76-2	< 2	> 2000	< 2000	< 1500	< 1000
1,2,4-Trimethylbenzene	95-63-6	< 2	> 2000	< 2000	< 1500	< 1000
1,4-Dichlorobenzene	106-46-7	< 2	> 120	< 120	< 90	< 60

The product was assigned a VOC emission class without taking into account the measurement uncertainty associated with the result. As specified in French Decree no. 2011-321 of March 23 2011, correct assignment of the VOC emission class is the sole responsibility of the party responsible for distribution of the product in the French market.

### 5.2 Comparison with Limit Values of the CMR Components

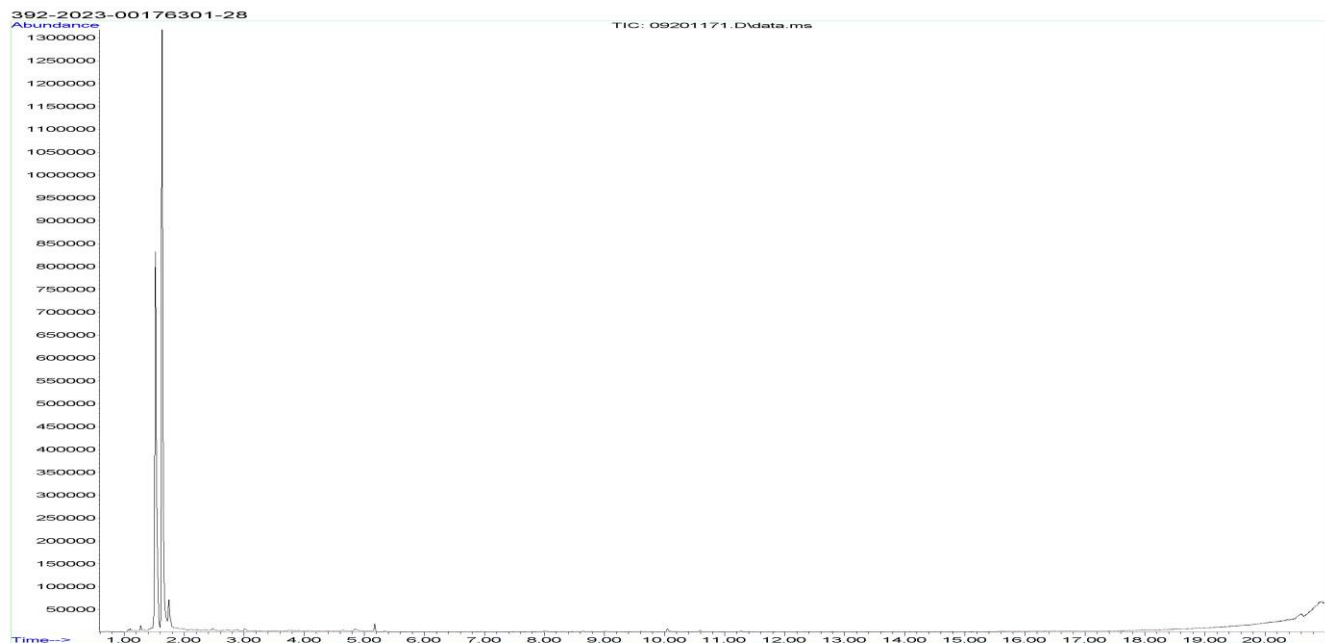
CMR (French reg.)	CAS No.	Conc. 28 days $\mu\text{g}/\text{m}^3$	Max. allowed air concentration $\mu\text{g}/\text{m}^3$
Benzene	71-43-2	< 1	< 1
Trichloroethylene	79-01-6	< 1	< 1
Dibutylphthalate (DBP)*	84-74-2	< 1	< 1
Diethylhexylphthalate (DEHP)*	117-81-7	< 1	< 1

The results are only valid for the tested sample(s).

This report may only be copied or reprinted in its entirety.

## 6 Appendices

### 6.1 Chromatogram of VOC Emissions after 28 Days



## 6.2 How to Understand the Results

### 6.2.1 Acronyms Used in the Report

<	Means less than
>	Means bigger than
*	Not a part of our accreditation
▫	Please see section regarding uncertainty in the Appendices
§	Deviation from method. Please see deviation section
SER	Specific Emission Rate



background concentrations in accordance with EN 16516 / ISO 16000-9 is determined.

Air sampling at the chamber outlet and subsequent analysis is performed in duplicate. Relative humidity, temperature and air change rate in the chambers is logged every 5 minutes and checked daily. A double determination is performed on random samples at a regular interval and results are registered in a control chart to ensure the uncertainty and reproducibility of the method.

The stability of the analytical system is checked by a general function test of device and column, and by use of control charts for monitoring the response of individual substances prior to each analytical sequence.

## 6.5 Accreditation

The testing methods described above are accredited on line with EN ISO/IEC 17025 by DANAK (no. 522). This accreditation is valid worldwide due to mutual approvals of the national accreditation bodies (ILAC/IAF, see also [www.eurofins.com/galten.aspx#accreditation](http://www.eurofins.com/galten.aspx#accreditation)).

Not all parameters are covered by this accreditation. The accreditation does not cover parameters marked with an asterisk (\*), however analysis of these parameters is conducted at the same level of quality as for the accredited parameters.

## 6.6 Uncertainty of the Test Method

The relative standard deviation of the overall analysis is 22%. The expanded uncertainty  $U_m$  equals 2 x RSD. For further information please visit [www.eurofins.dk/product-testing/uncertainty/](http://www.eurofins.dk/product-testing/uncertainty/).

## 6.7 Decision Rules

Eurofins Product Testing A/S, declare statement of conformity based on the “Binary Statement for Simple Acceptance Rule” described in ILAC’s “Guidelines on decision Rules and Statements of Conformity” ILAC-G8:09/2019.

This means that results above the detection limit are always reported with two significant digits. Results are evaluated with the same number of significant digits as the corresponding limit values, and conformity is based on results being less than or equal to limit values.

For limit values with more than two significant digits, the third digit will be used to confirm whether a result is below or equal to the limit value. It will always be indicated in the evaluation table if this expanded evaluation is performed.

For further information, please visit [www.eurofins.dk/product-testing/om-os/beslutningsregler/](http://www.eurofins.dk/product-testing/om-os/beslutningsregler/)

## 6.8 Version History

Report date	Report number	Modification
13/06/2023	392-2023-00176301_E_EN	Current version